

RE-Studio Well Controls



Tutorial for RE-Studio module Well Controls

www.amarile.fr

Tél : +331 42 60 34 55
3, rue des Jeûneurs, 75°002 Paris

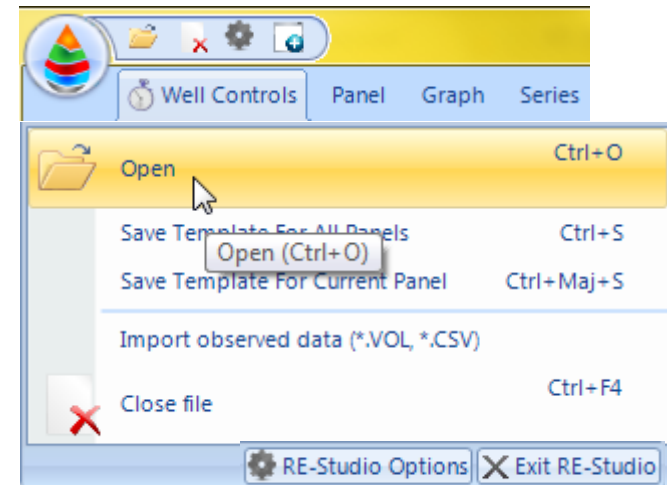
 amarile



Quick Start: Open Schedule files

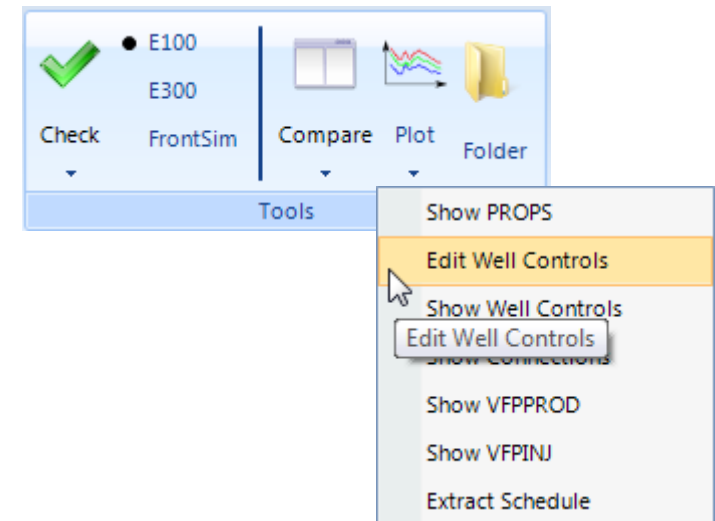
■ In Well Controls

- Click Open
- Pick up a DATA file



■ Or, from For ECLIPSE

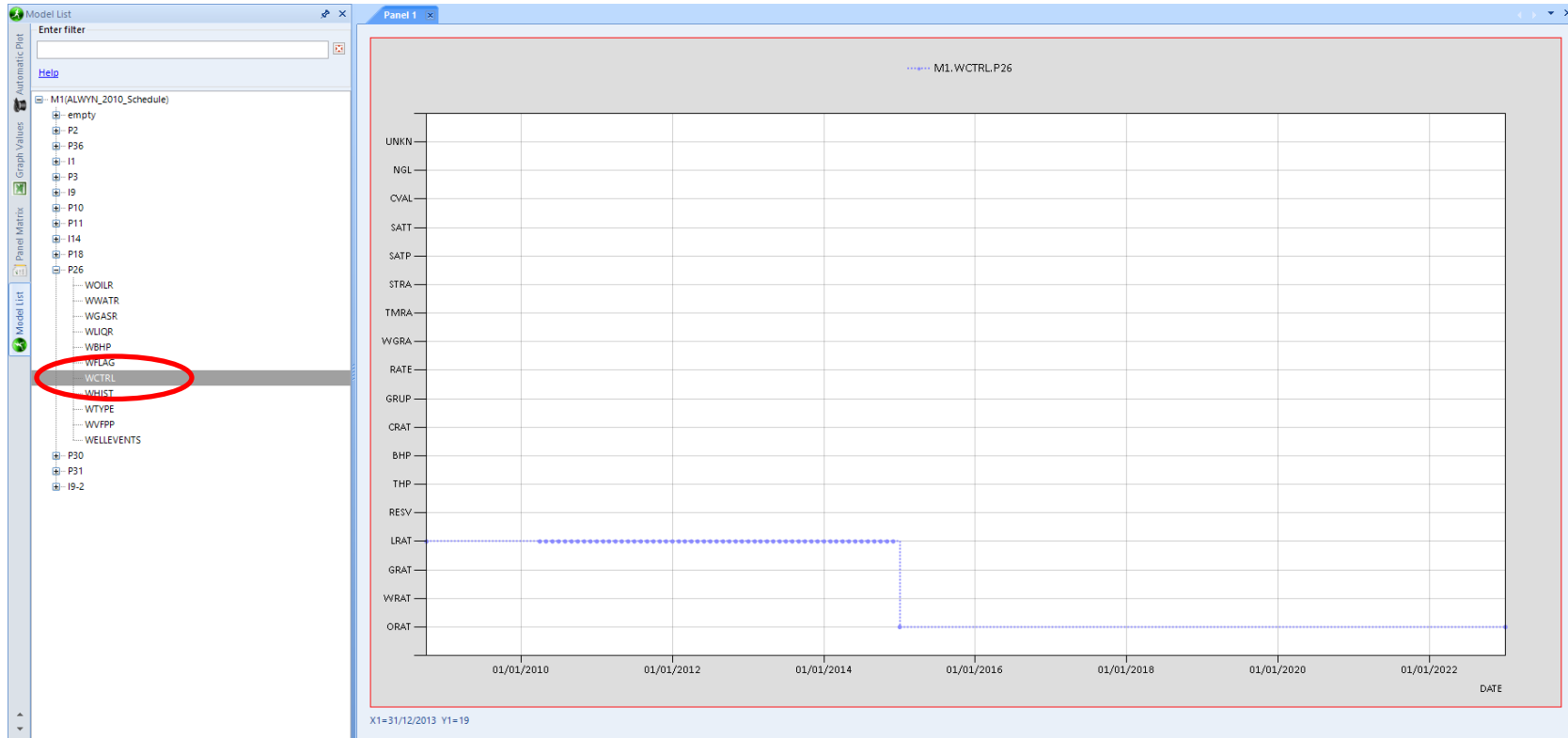
- In Plot button
 - Edit Well Controls



Direct Graph Modification

Plot one of the values you want to modify

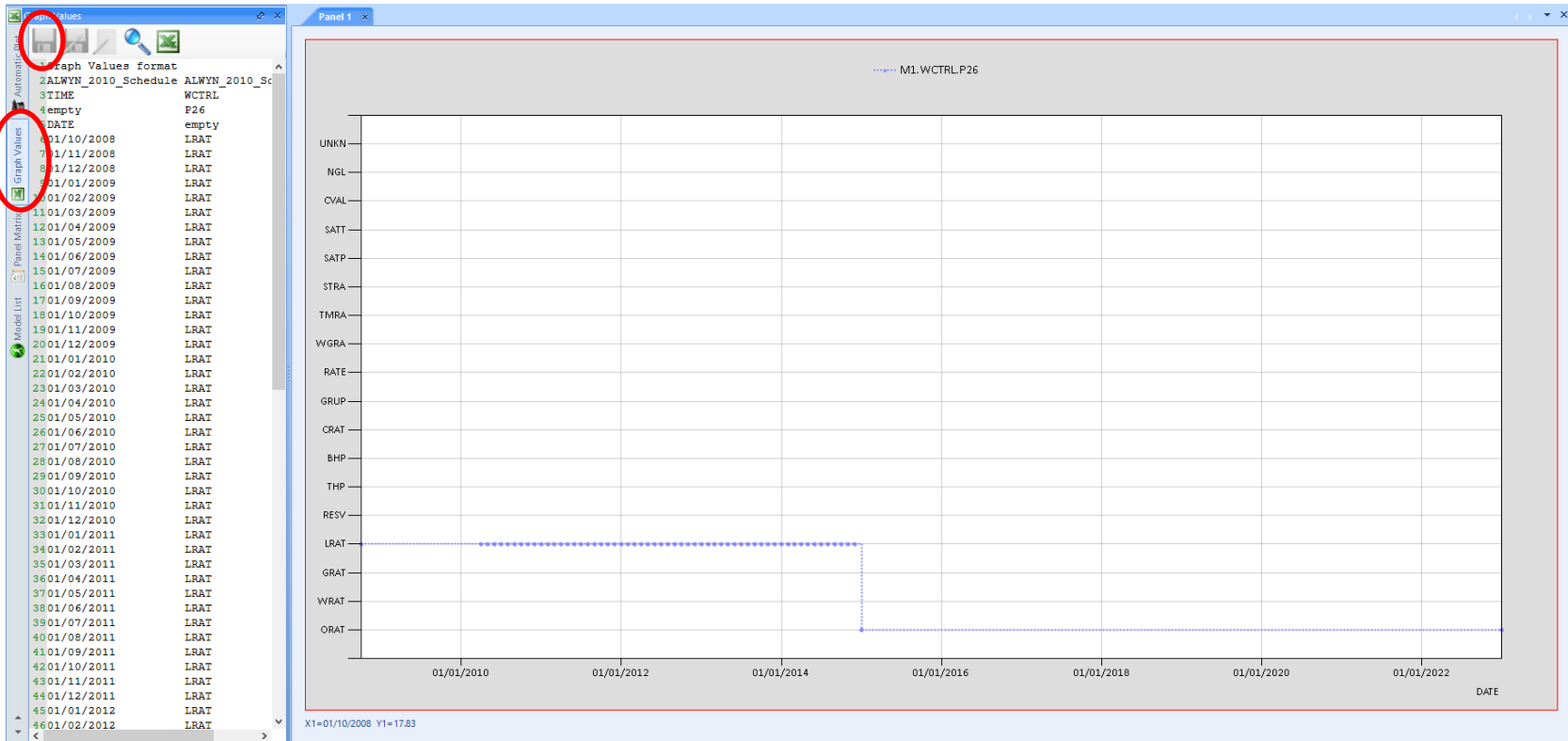
Example: Well Control from Well P26



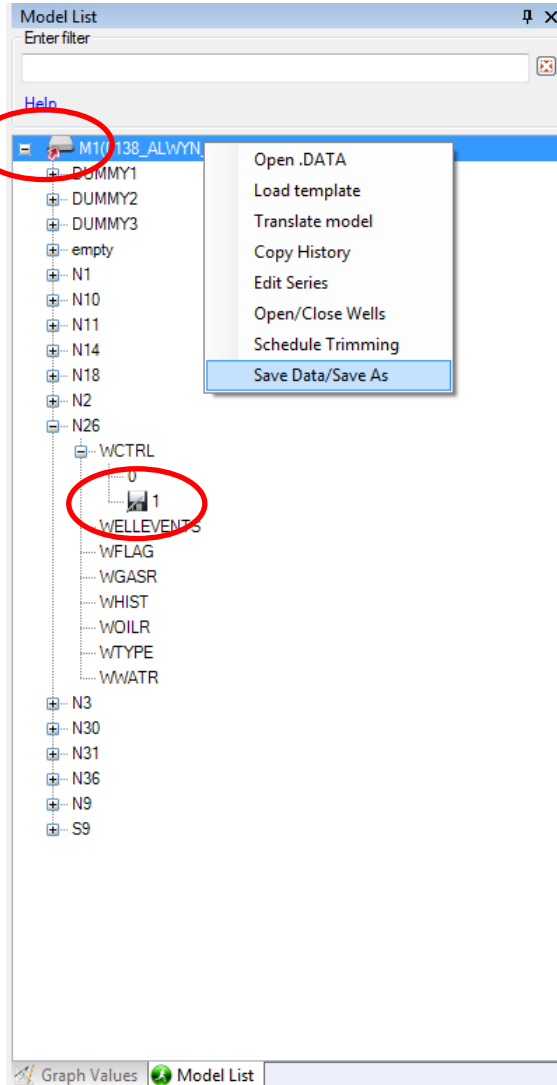
Direct Graph Modification 2



Modify the Graph Values

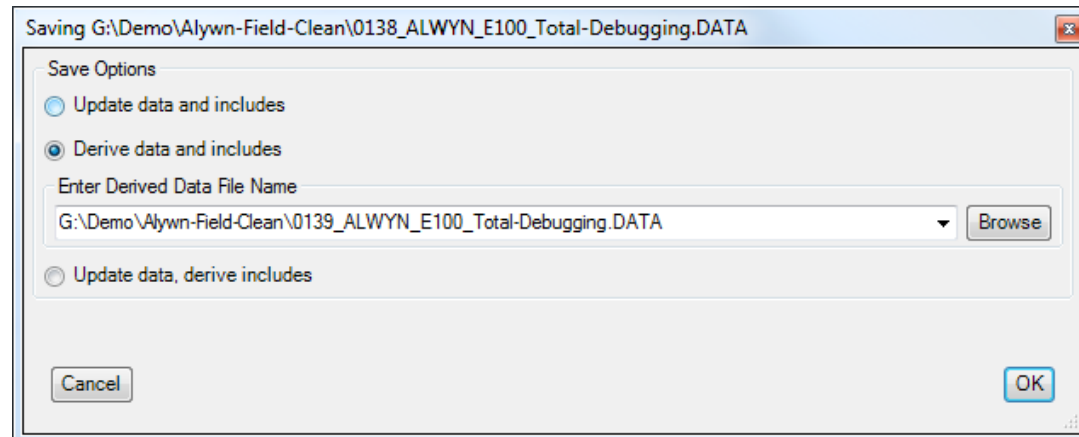
Perform Block editing (Alt key) and save modification



Save/Save as: update or generate .DATA file from modifications



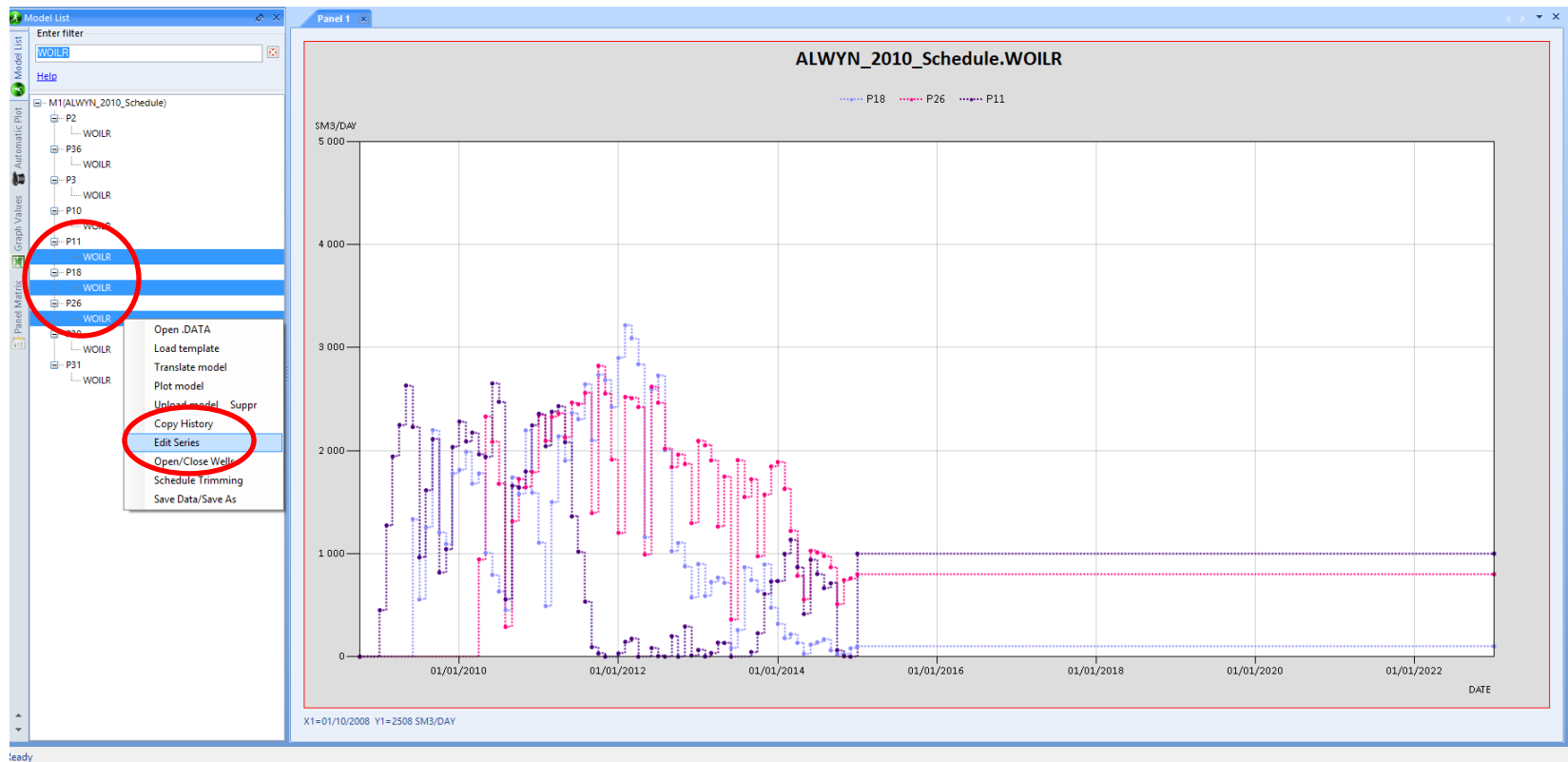
- Modified models are 
- Series with  will be exported
- Right Click on a model
 - Update: will save into existing files
 - Derive: will save as new files. The new model will appear in the Model List



Edit Series – Multiple Wells

Modify Rates and Controls for History / Forecast

Example: Modify Oil Rate for 3 wells on year 2008



Edit Series – Multiple Wells 2

- Edit Series on a Date interval for selected wells
- Example: WOILR (Oil Rate) will be set to 1000

The screenshot shows a dialog box titled "Edit Series in ALWYN_2010_Schedule". It contains the following elements:

- Enter Filter:** A text input field with a "Help" button.
- Select Wells:** A list of wells with checkboxes. A red circle highlights the checked wells: P11, P18, P2, and P26.
- From Date:** A dropdown menu showing a list of dates from 01-Oct-2008 to 01-May-2010. A red circle highlights "01-Mar-2009" and "01-Apr-2009".
- To Date:** A dropdown menu currently set to "END".
- New Value:** A text input field containing the value "1000".
- Apply:** A button at the bottom right.



Enjoy engineering

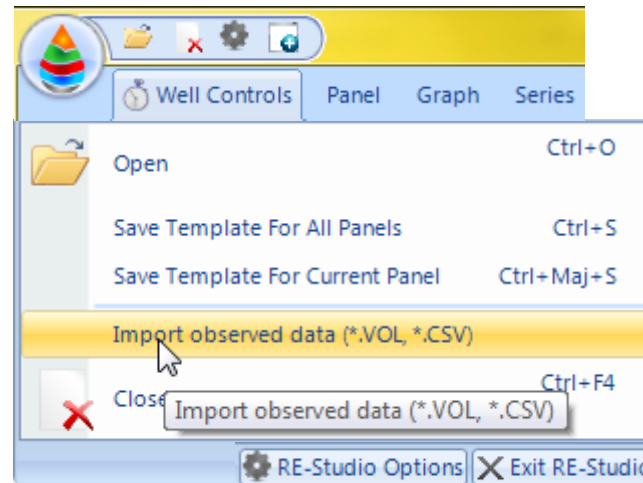
www.amarile.fr

Tél : +331 42 60 34 55
3, rue des Jeûneurs, 75002 Paris



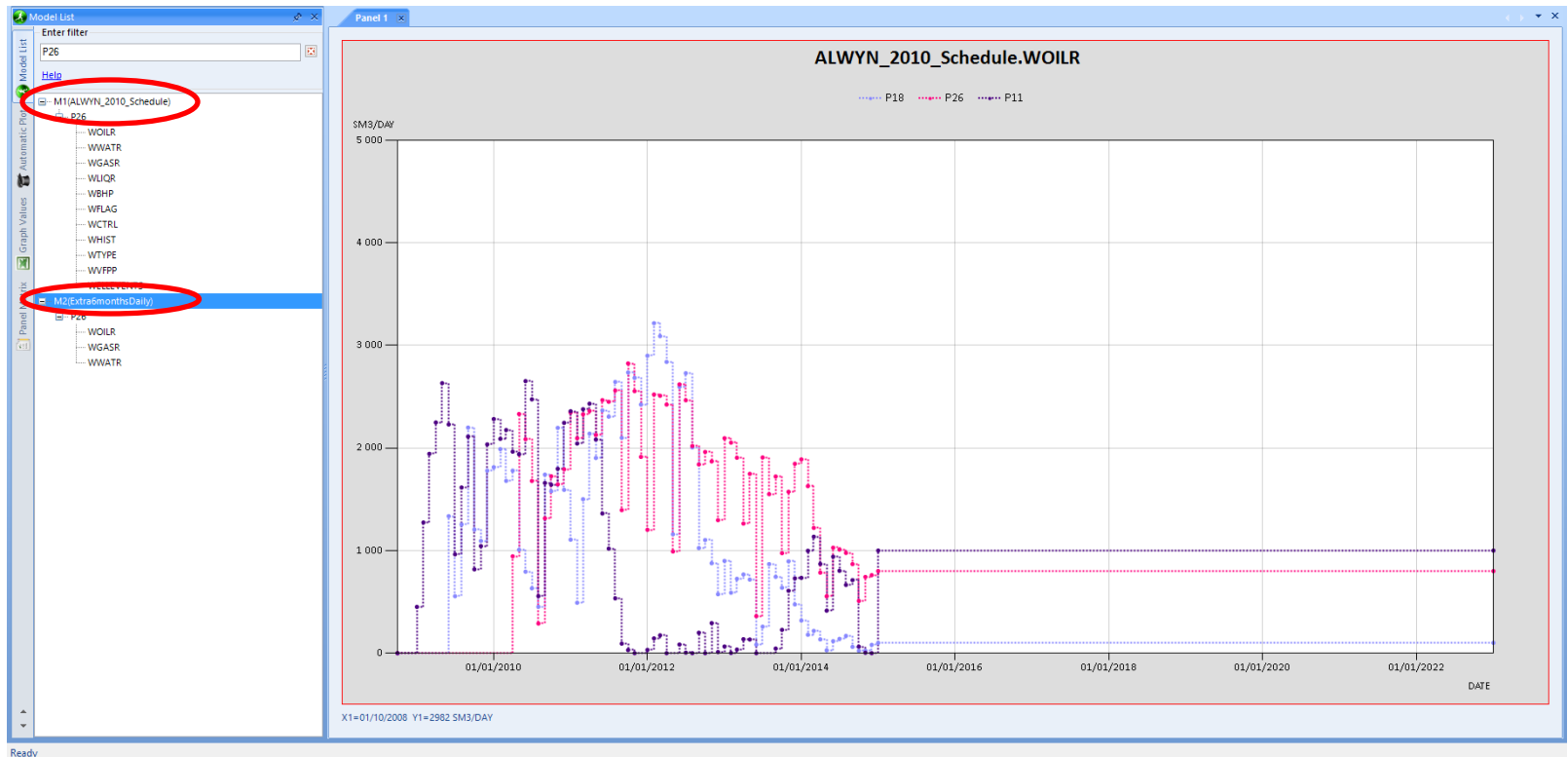
Update Production History

- Use VOL files or CSV files to import external data
- Import observed data from main menu



Update Production History 2

- Operate the copy of Data from VOL/CSV to input
 - You can plot History Data along with Schedule Data
 - Right click on the model and 'Copy History'



Update Production History 3

- ❏ Select source and destination
- ❏ Select the time interval to copy
- ❏ Source series are shown as named in the CSV/VOL file
- ❏ Translation series
 - correspond to significant data that will be written as specific ECLIPSE items
 - Use Discard if you want to skip corresponding source series
- ❏ Click OK to process

Copy History

From Model: N26-N30WOPR To Model: 0138_ALWYN_E100_Total-Debi

From Date: 01-Oct-1987 To Date: 01-Nov-1999

Translate series names

Series Name Translations

Source Series	Translation
WATER	WWATR
WOPR	WOILR

[Setup default translations](#)

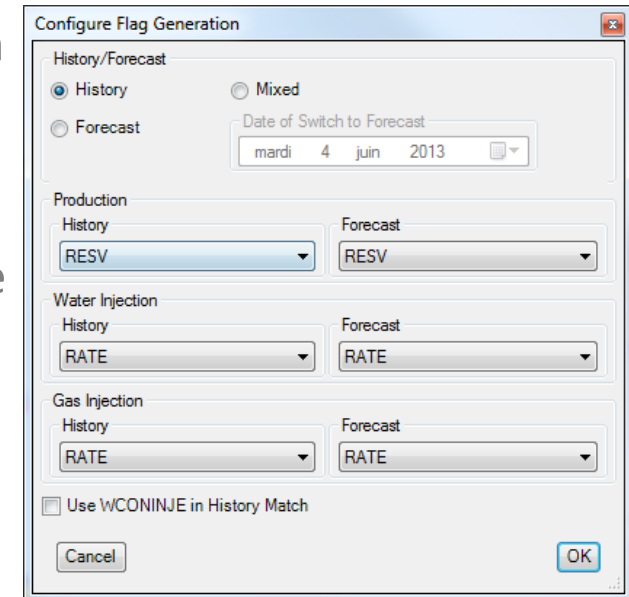
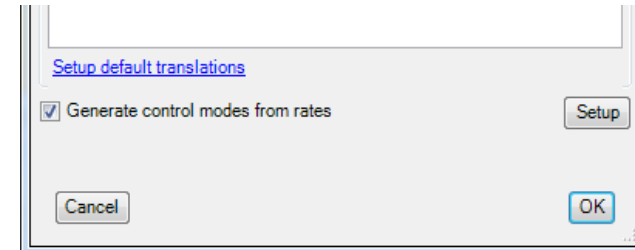
Generate control modes from rates Setup

Cancel OK

Update Production History

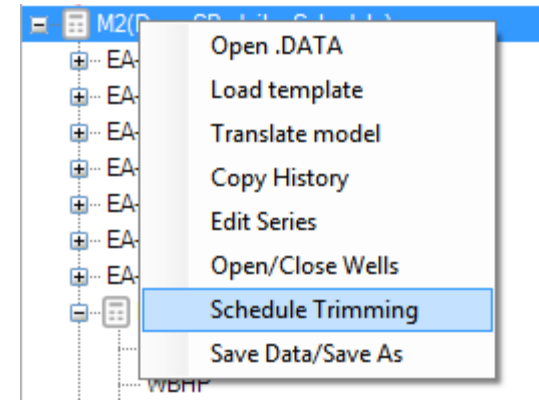
Advanced options

- Set up default translations if you have specific CSV rules
- “Generate control modes from rates”
 - Ticked
 - WCTRL series in source model are discarded; WCTRL series in destination model will be overridden by default defined in Setup dialog
 - Unticked
 - if WCTRL series are defined in source model, they will override WCTRL in destination model
 - Otherwise, WCTRL series in destination models are unchanged



Schedule Trimming

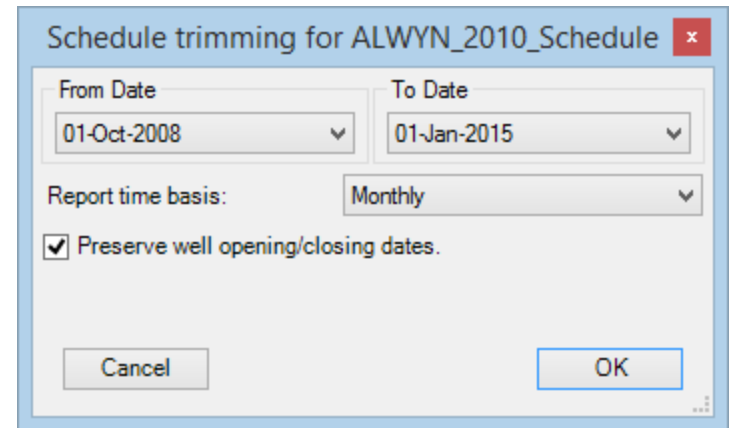
Right-click on the model to trim



Choose the date interval to trim

Choose report time basis

- Daily
- Weekly
- Monthly
- Quarterly
- Yearly



Schedule Trimming option

❏ Preserve well opening/closing

- ❏ Checked: when a WFLAG series changes, the date will be kept. That results in a less efficient trimming but may be useful to have exact dates for static measurements
- ❏ Unchecked : trimming is forced, and WEFAC keyword is used to ensure both correct nominal rates and totals

❏ Save or Save as the trimmed model to save it to disk.